

Flow-Liner®

“Tours the Oklahoma Capitol” With a Pipe Lining Technology Answer



History

The Oklahoma State Capitol sits on more than 100 acres in NE Oklahoma City and it is the only capitol in the world surrounded by working oil wells. The architecture is Greco-Roman and is comprised of 650 rooms and 11 acres of floor space with murals, restored stained glass, tribal flag plaza and changing art exhibits. The current site was chosen in 1915 and construction was completed in 1917. The dome feature was included with the original design plans of the building but was not completed until 2002.

Problem

The Oklahoma State Capitol had a cast iron roof drain that was leaking during heavy rains.

Issue

The roof drain was 8 inch vertical line, approximately 100 feet in length and included reinstatements of two condensate branch lines. Replacement was not an option due to the disruption to occupied office spaces where the branch lines were located.

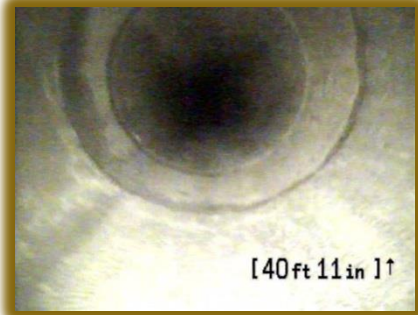
Solution

Using Flow-Liner® technology, a Flow-Liner Certified Installer prepared and installed the “Flow-Liner® Cured-In-Place Pipe Lining System”.

Results

The roof drain line was successfully lined and branch lines reinstated without excavation or disruption the occupied office spaces at the Capitol Building. The Capitol Maintenance Administrator was very pleased with the results and commented:

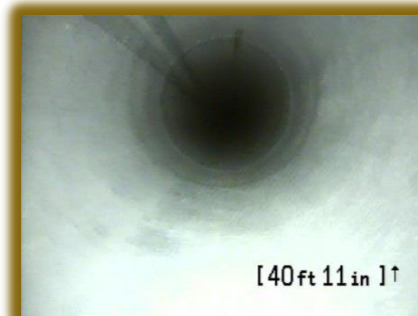
“We would highly recommend your product and consider it a very viable option compared to pipe replacement. I was really impressed with the strength of your product.”



Condition of 8 inch roof drain before lining



Flow-Liner® Equipment Set-up



8 inch roof drain after Flow-Liner® installed

We are pleased to announce another successful project and proudly add

State of Oklahoma

to our list of happy and satisfied customers.