

FLOW-LINER[®] SYSTEMS

“A Reservoir of Lining Success”

UTILIZING NON-INVASIVE TECHNOLOGIES



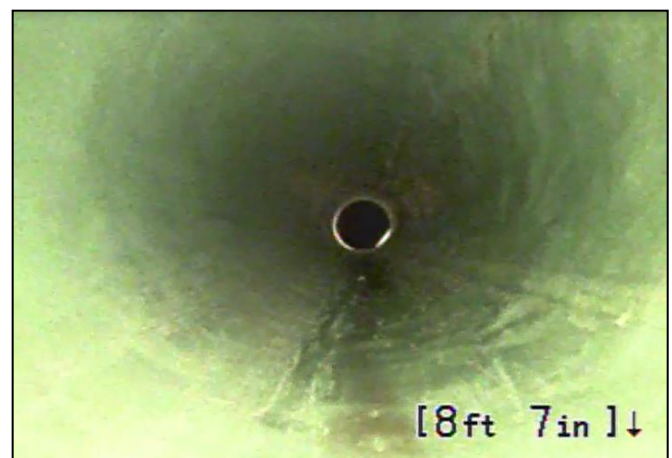
Located in Palo Pinto County, Texas, the Morris Sheppard Dam crosses 2700ft of Possum Kingdom Lake. As the first water supply reservoir on the Brazos River with construction as early as 1936, it is no surprise the Brazos River Authority found need for non-invasive pipe lining technologies. Their contractors contacted Flow-Liner[®] Systems.



A certified Flow-Liner[®] Installer, using the Cured-in-Place-Pipe lining method, successfully lined nine gate chamber pipes, no excavation necessary. The customer was very pleased.

“a cost-effective and high quality solution”
-Alltech Project Manager

“We highly recommend your product...”
-Conti Project Manager



We are pleased to announce another successful project and proudly add



Alltech Engineering/Conti Corporation



to our list of happy and satisfied customers.